

HMGMA Water Service

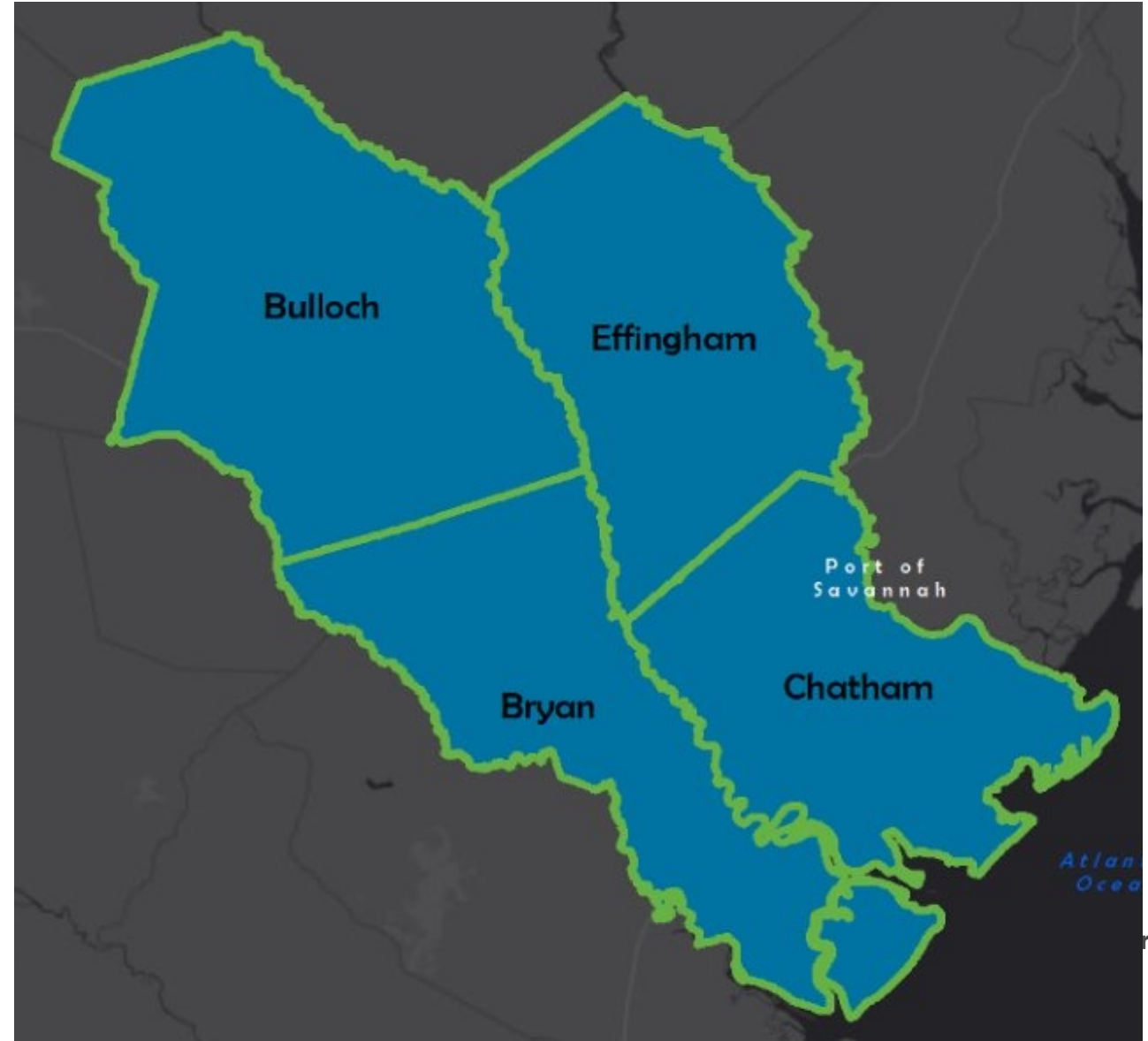


**Savannah Harbor-Interstate 16 Corridor
Joint Development Authority**

BRYAN • BULLOCH • CHATHAM • EFFINGHAM

Formation & Background

- Savannah Harbor-Interstate 16 Corridor Joint Development Authority (Savannah JDA) formed in 2014
- Bryan County Megasite
- Hyundai Motor Group announced May 20, 2022
- \$27 million has been spent on due diligence on the Bryan County Megasite
- Major water and sewer infrastructure improvements needed to support growth
- Phased approach (timing and cost)



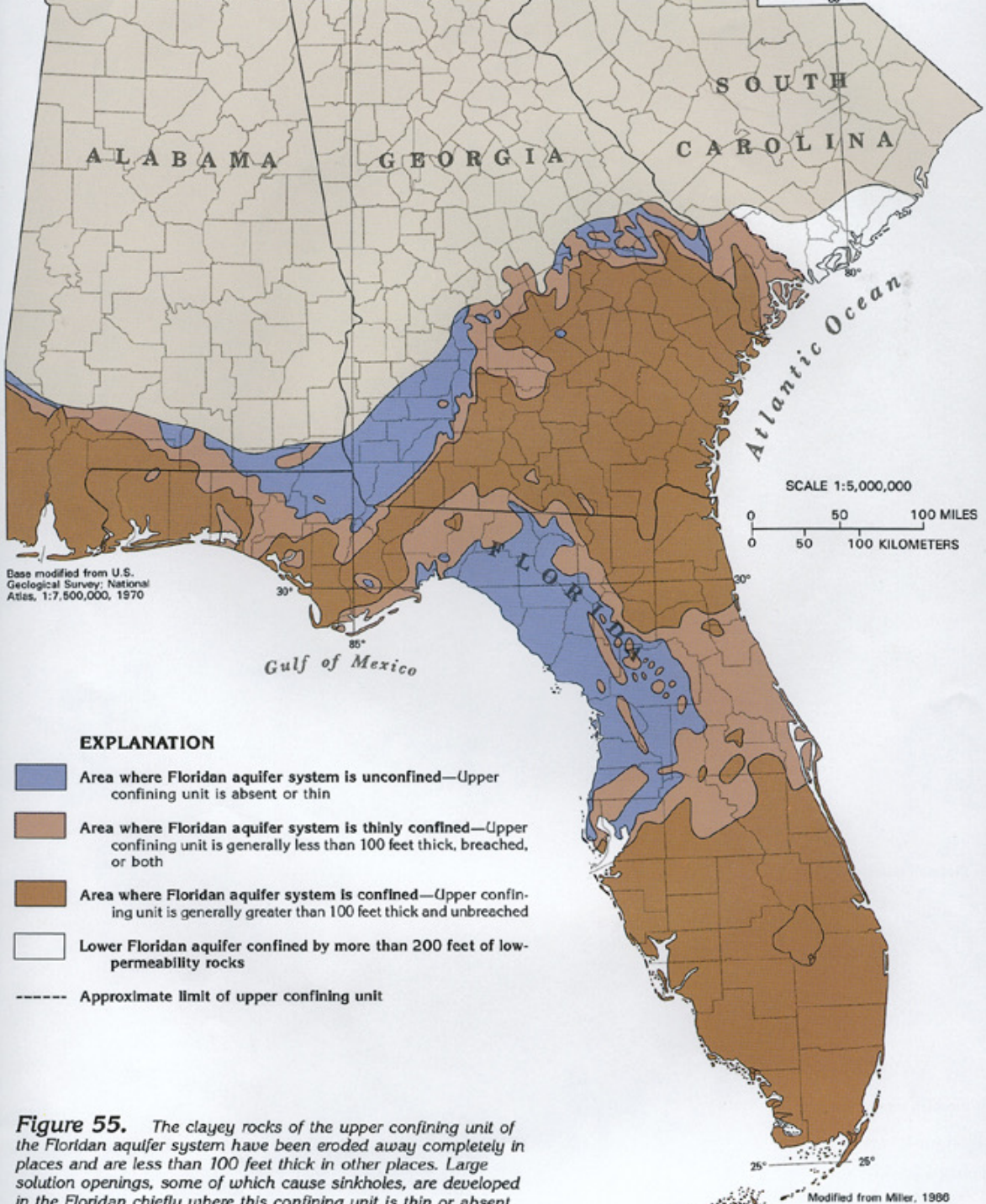
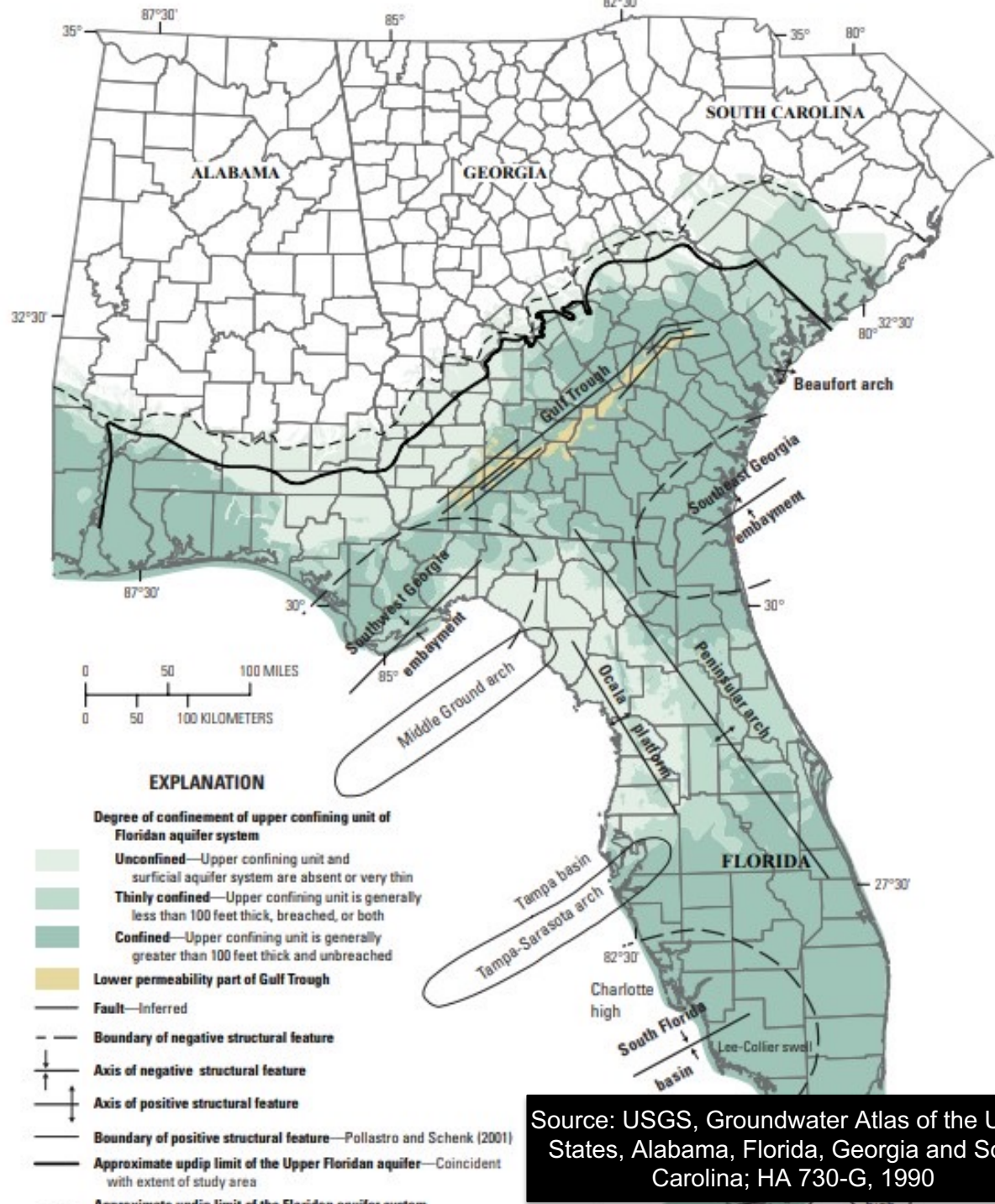


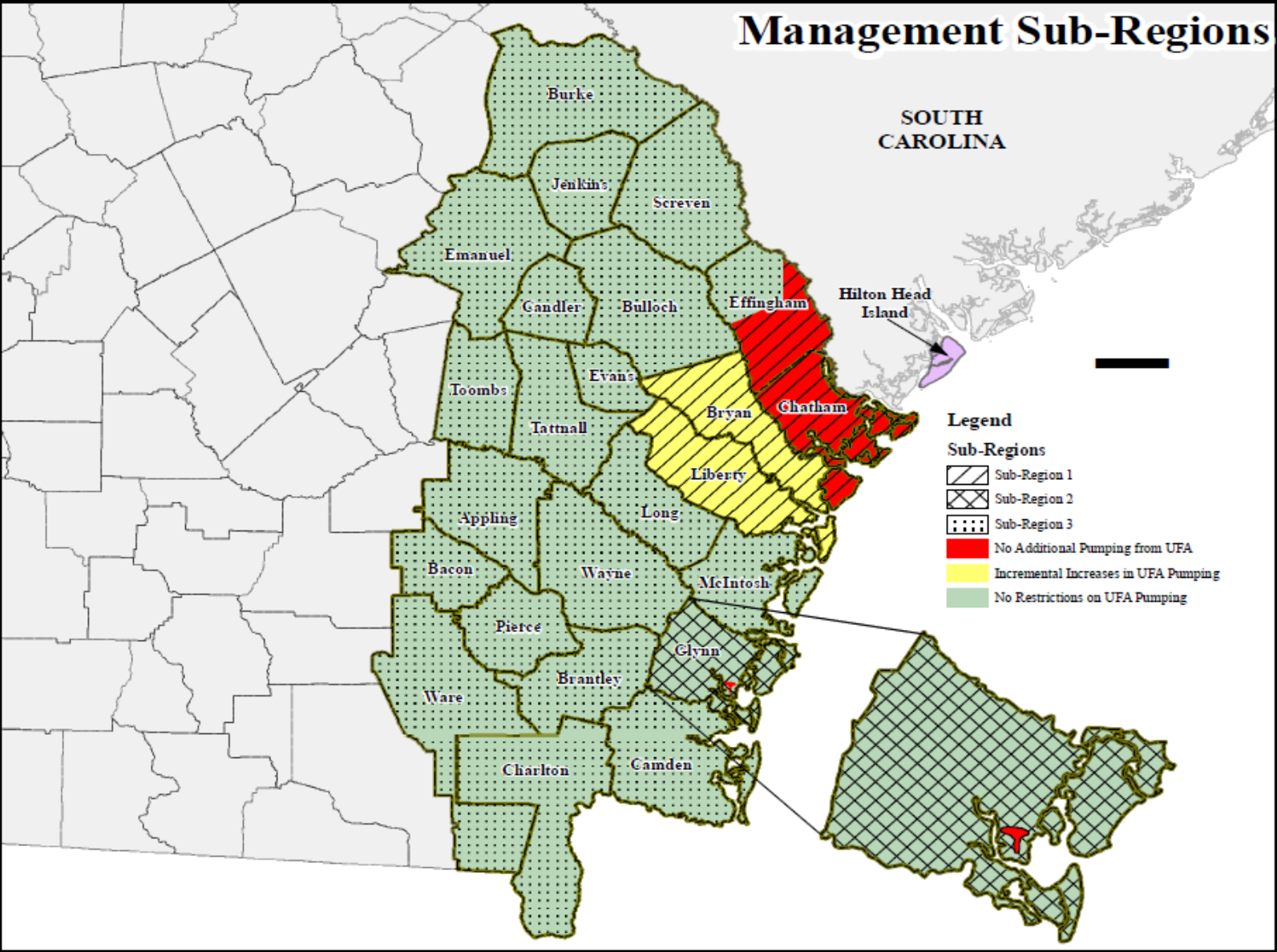
Figure 55. The clayey rocks of the upper confining unit of the Floridan aquifer system have been eroded away completely in places and are less than 100 feet thick in other places. Large solution openings, some of which cause sinkholes, are developed in the Floridan chiefly where this confining unit is thin or absent.



Source: USGS, Groundwater Atlas of the United States, Alabama, Florida, Georgia and South Carolina; HA 730-G, 1990

Coastal Georgia: Groundwater Management Zones

Management Sub-Regions



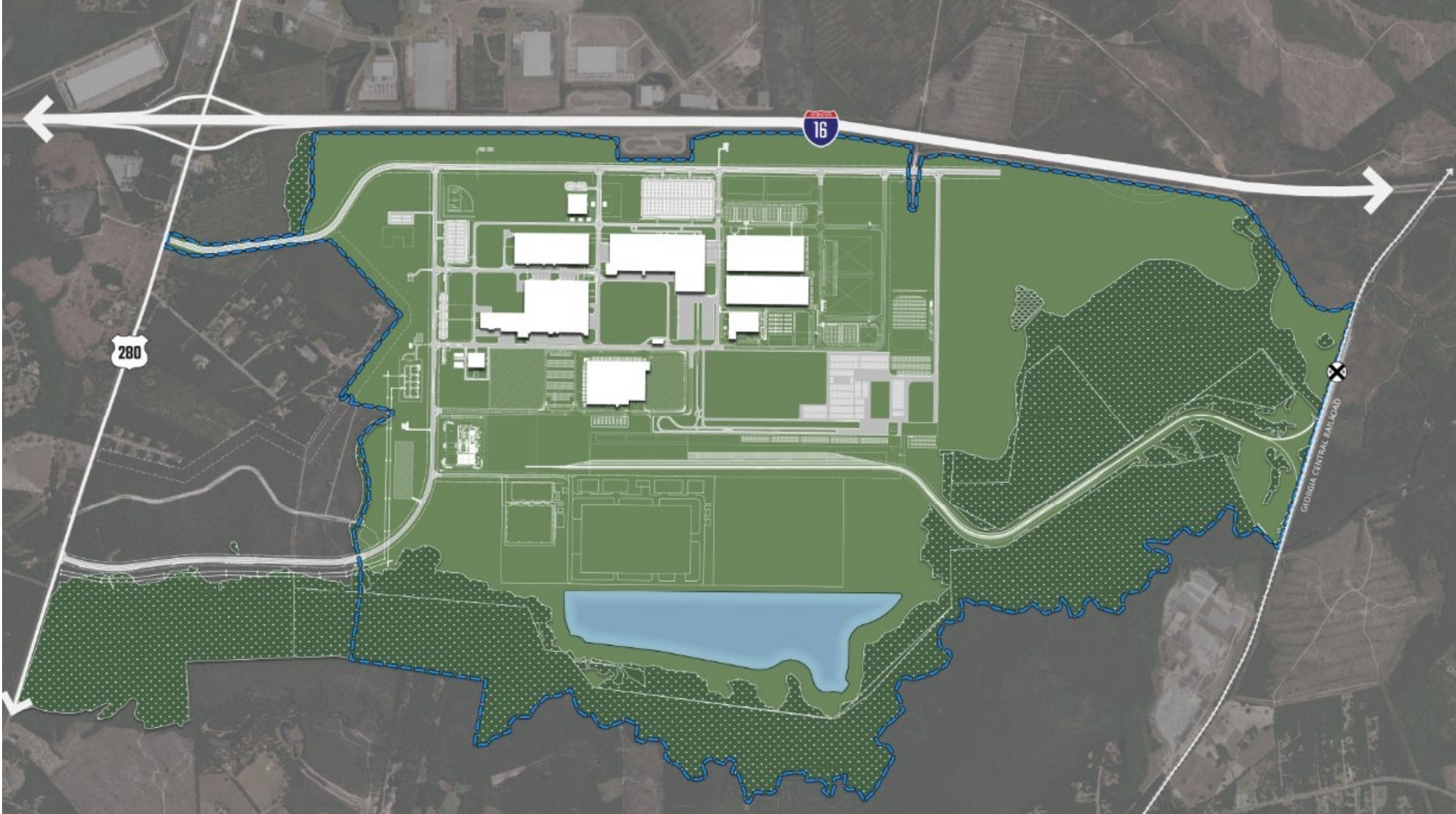
Source: GA EPD – Coastal Georgia Water & Wastewater Permitting Plan for Managing Salt Water Intrusion



**Savannah Harbor-Interstate 16 Corridor
Joint Development Authority**

BRYAN • BULLOCH • CHATHAM • EFFINGHAM

Bryan County Megasite: 10 Years of Due Diligence



Wastewater Infrastructure Plan



SERVICE AREAS

- I-16 CORRIDOR SERVICE AREAS
- NEW SAVANNAH SERVICE AREAS
- EXISTING INDUSTRIAL SITES

KEY

- EXISTING WATER RECLAMATION FACILITY
- FUTURE WATER RECLAMATION FACILITY
- EXISTING FORCE MAIN
- FUTURE FORCE MAIN
- EXISTING SANITARY SEWER
- INDICATES PARALLEL FORCE MAINS
- MASTER PUMP STATION
- EXISTING PUMP STATION

0 5000 10000 15000 FEET

CROSSROADS WATER RECLAMATION FACILITY
 CAPACITY 3.0 MGD / (11,356 m³/day)

UNDER CONSTRUCTION TRAVIS FIELD WATER RECLAMATION FACILITY
 CAPACITY 4.0 MGD / (15,142 m³/day)
 FUTURE 8.0 MGD / (30,283 m³/day)

SEDA MASTER PUMP STATION

NEW HAMPSTEAD PUMP STATION #193

EXISTING PUMP STATION #194

SAVANNAH PORTSIDE INTERNATIONAL PARK

BLOOMINGDALE

POOLER

CHATHAM COUNTY

CITY OF SAVANNAH

THE CUBES INTERSTATE CENTRE

BRYAN COUNTY INTERSTATE CENTRE

BRYAN COUNTY MEGASITE

MINGLEDORFF TRACT

US HWY 80 NORTH BRYAN CO. INDUSTRIAL TRACTS

VAN TRUST

INTERSTATE CENTRE 3

SAVANNAH CHATHAM MANUFACTURING CENTER

PORT FRESH LOGISTICS PARK

SAVANNAH CHATHAM MANUFACTURING CENTER

GRAINGER TRACT

MORGAN TRACTS

HORIZON TRACT

NEW HAMPSTEAD

SAVANNAH-HILTON HEAD INTERNATIONAL AIRPORT

CHATHAM COUNTY DEVELOPMENT SITE

JIMMY DELOACH BOULEVARD

POOLEY PARKWAY

OLD RIVER ROAD

JOHN CARTER ROAD

LITTLE NECK ROAD

LITTLE NECK ROAD

QUAIACCO ROAD

EXIT 143

EXIT 14B

EXIT 152

EXIT 155

EXIT 157

EXIT 160

16

80

16

95

204

17

95

EQ

PS

PS

EPS

PS

EPS

20 in (500 mm)

16 in (400 mm)

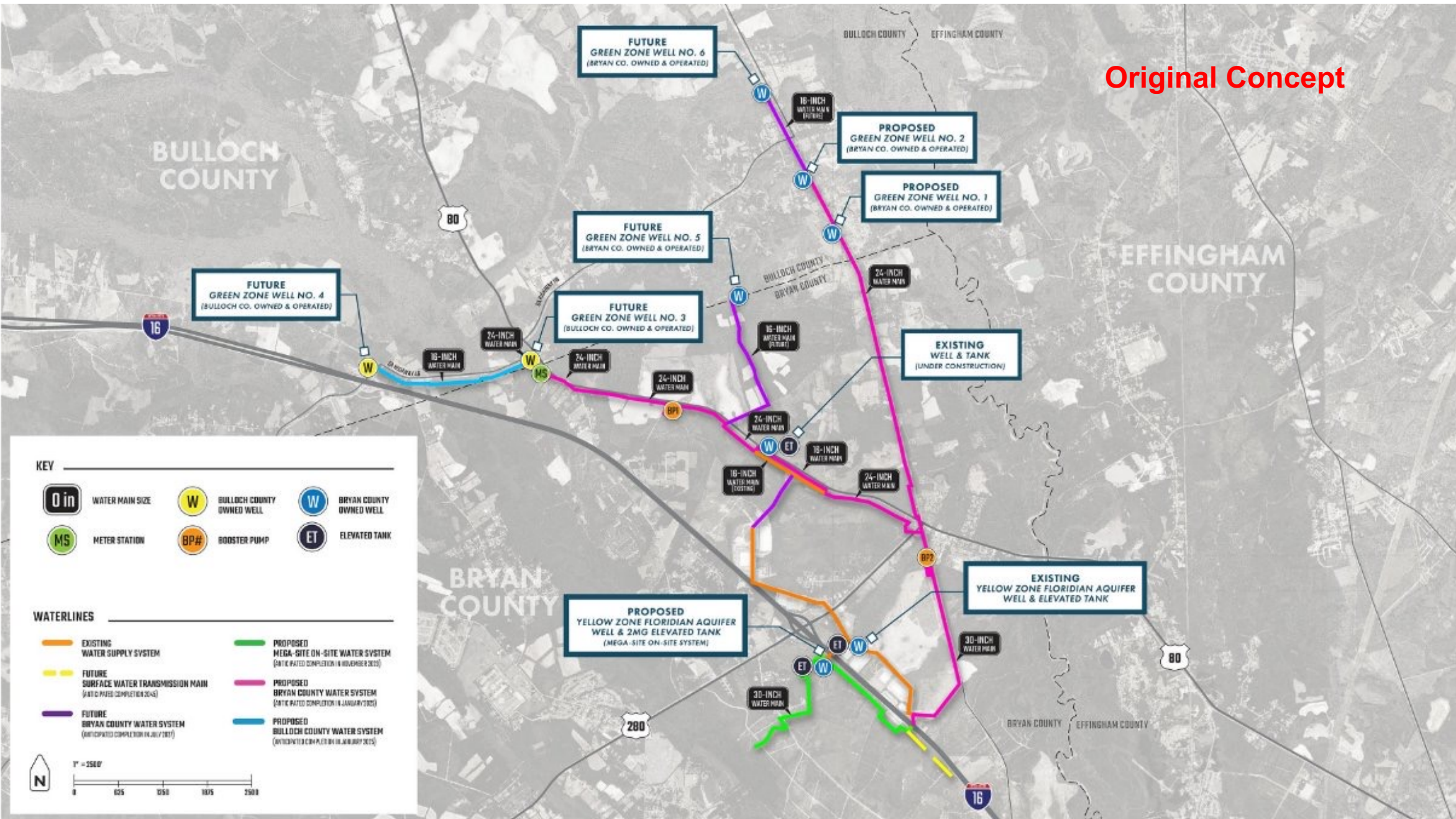
24 in (600 mm)

16 in (400 mm)

16 in (400 mm)

Near-term: Water Withdrawal & Water Transmission System

Original Concept



KEY

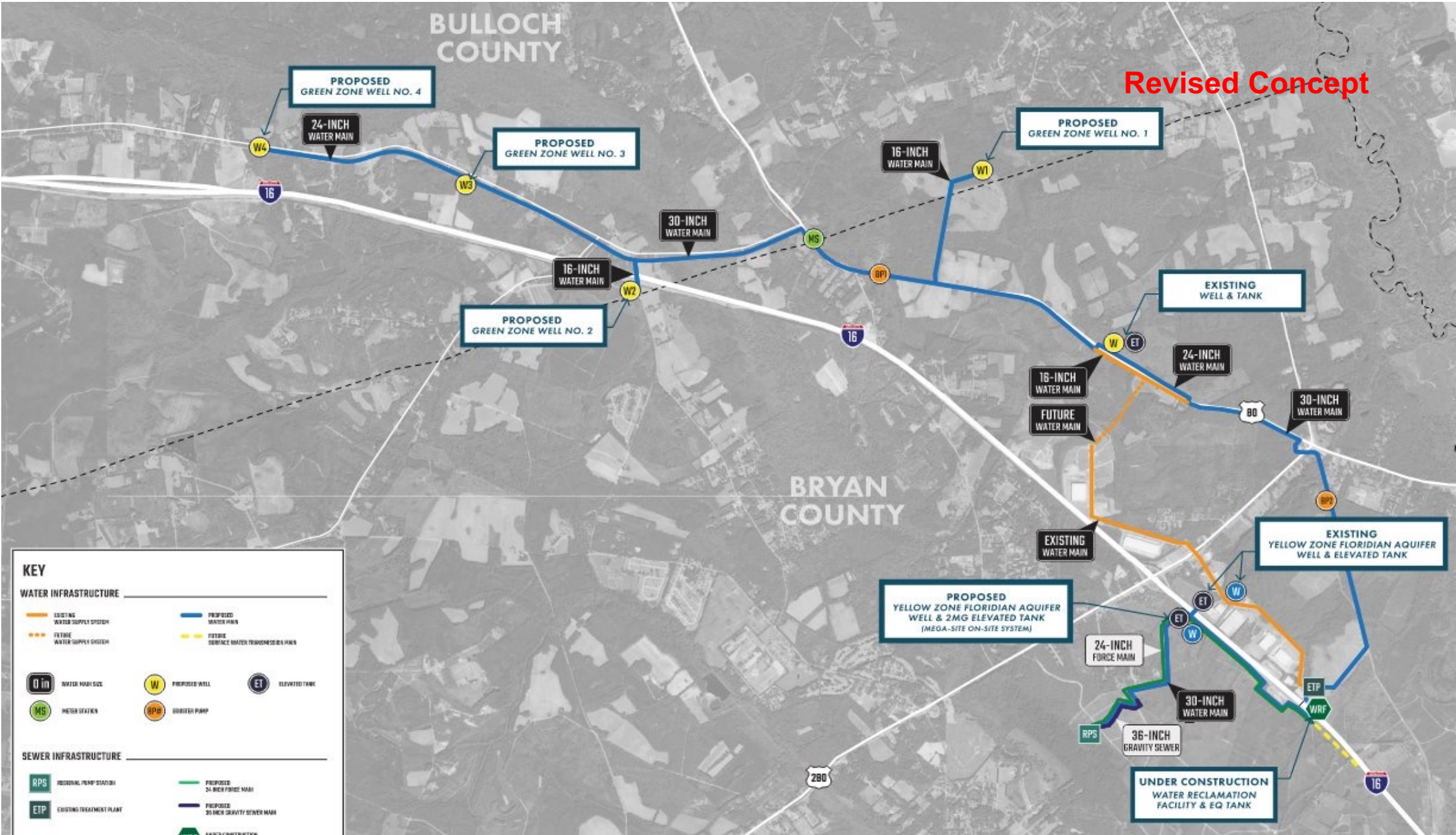
WATER MAIN SIZE	BULLOCH COUNTY OWNED WELL	BRYAN COUNTY OWNED WELL
METER STATION	BOOSTER PUMP	ELEVATED TANK

WATERLINES

EXISTING WATER SUPPLY SYSTEM	PROPOSED MEGA-SITE ON-SITE WATER SYSTEM (ANTICIPATED COMPLETION IN NOVEMBER 2025)
FUTURE SURFACE WATER TRANSMISSION MAIN (ANTICIPATED COMPLETION IN 2024)	PROPOSED BRYAN COUNTY WATER SYSTEM (ANTICIPATED COMPLETION IN JANUARY 2025)
FUTURE BRYAN COUNTY WATER SYSTEM (ANTICIPATED COMPLETION IN JULY 2025)	PROPOSED BULLOCH COUNTY WATER SYSTEM (ANTICIPATED COMPLETION BY 10 JANUARY 2025)



Near-term: Water Withdrawal & Water Transmission System



KEY	
WATER INFRASTRUCTURE	
	EXISTING WATER SUPPLY SYSTEM
	PROPOSED WATER MAIN
	FUTURE WATER SUPPLY SYSTEM
	FUTURE SERVICE WATER TRANSMISSION MAIN
	WATER MAIN SIZE
	PROPOSED WELL
	ELEVATED TANK
	METER STATION
	BOOSTER PUMP
SEWER INFRASTRUCTURE	
	RESIDENTIAL PUMP STATION
	PROPOSED 24-INCH FORCE MAIN
	EXISTING TREATMENT PLANT
	PROPOSED 36-INCH GRAVITY SEWER MAIN
	UNDER CONSTRUCTION

Georgia EPD draft Bryan County and Bulloch County Groundwater Permits

- Permit is for Bryan County Megasite and other associated development.
- The Bryan County permit is for 3.5 million gallons per day monthly and the Bulloch County permit is for 3.125 million gallons per day monthly.
- Draft permit from Georgia EPD requires plan for long-term alternative water supply to be developed in six months from permit approval.
- Long-term alternative water supply must be completed within 25 years.

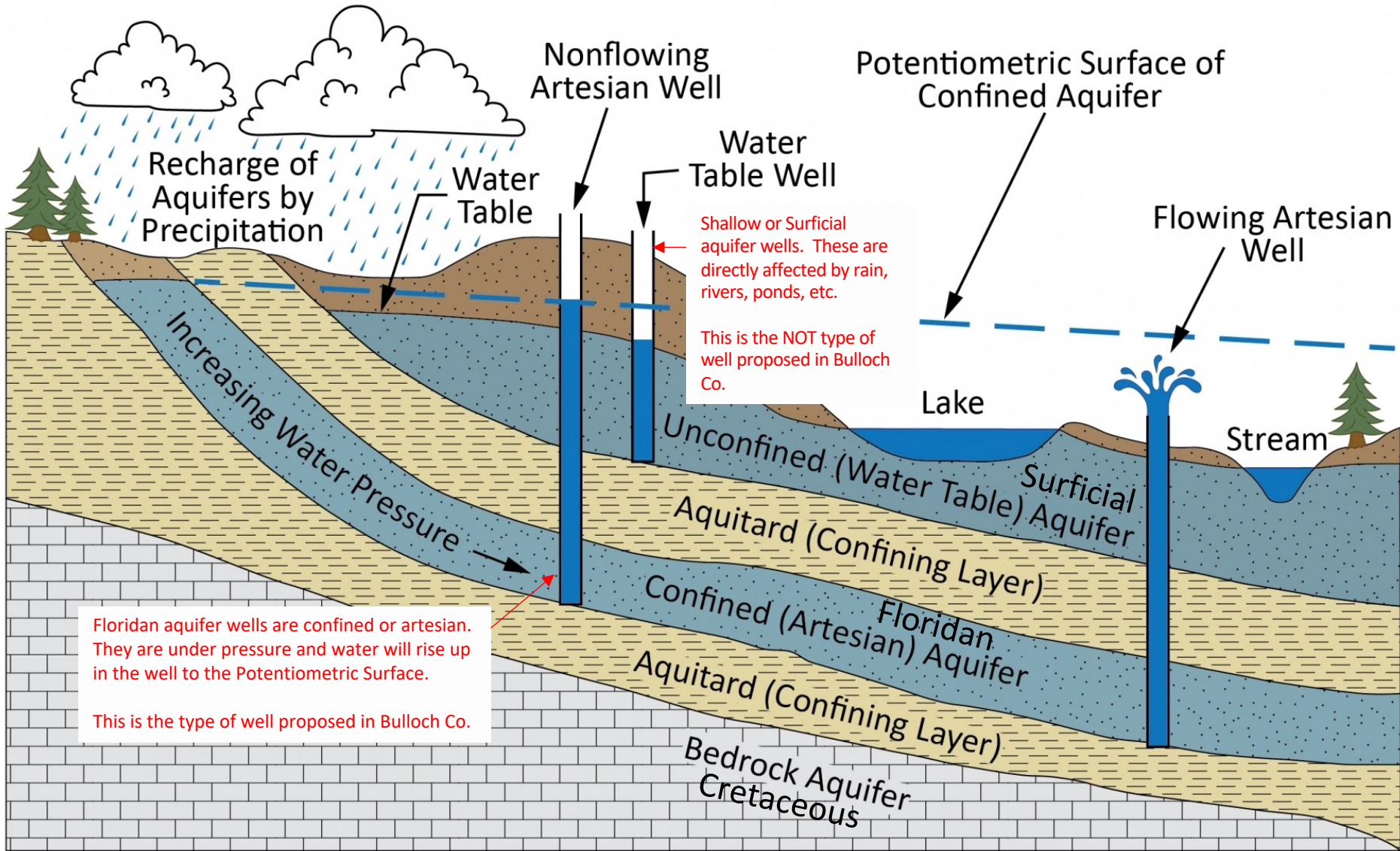
*Conditional approval based on plan



Savannah Harbor-Interstate 16 Corridor
Joint Development Authority

BRYAN • BULLOCH • CHATHAM • EFFINGHAM

Groundwater: Not all aquifers are the same



Floridan aquifer wells are confined or artesian. They are under pressure and water will rise up in the well to the Potentiometric Surface.
This is the type of well proposed in Bulloch Co.

Shallow or Surficial aquifer wells. These are directly affected by rain, rivers, ponds, etc.
This is the NOT type of well proposed in Bulloch Co.

Modified from Source: Utah Geological Survey

Floridan aquifer: Usage across Southeastern U.S.

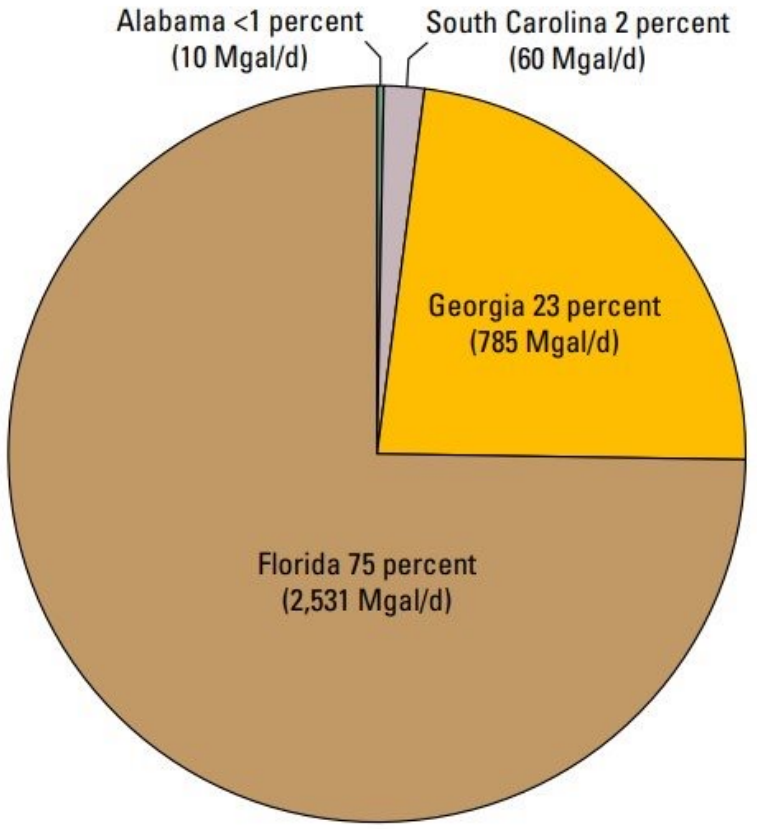


Figure 20. Average groundwater withdrawals from the Florida aquifer system by State, southeastern United States, 1995–2010 (data from Bellino, 2017; numbers may not sum to equivalent tot because of independent rounding; Mgal/d, million gallons per day).

Source: USGS-Hydrogeologic Setting, Conceptual Groundwater Flow System, and Hydrologic Conditions 1995–2010 in Florida and Parts of Georgia, Alabama, and South Carolina; scientific Investigations Report 2018-5030

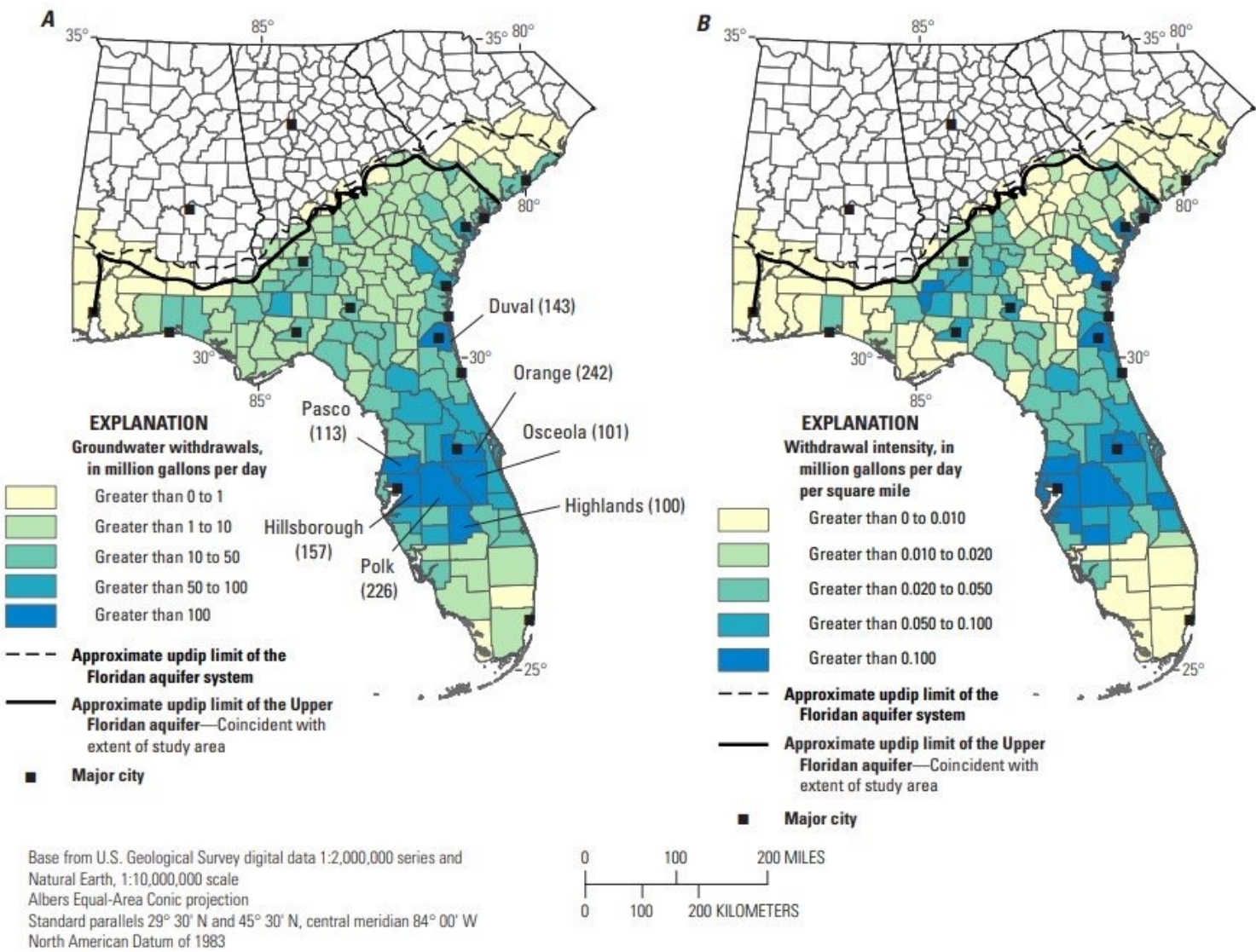
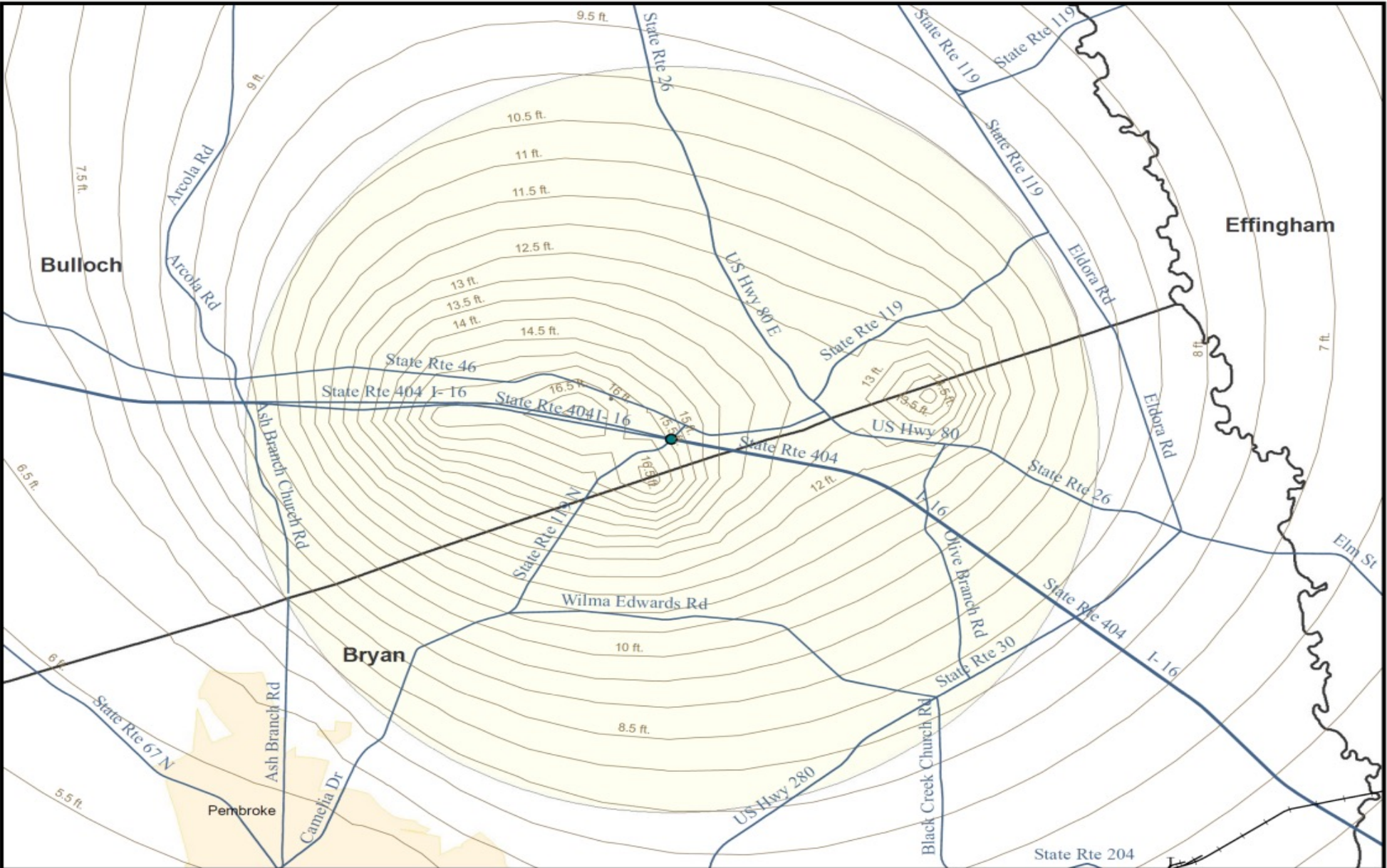


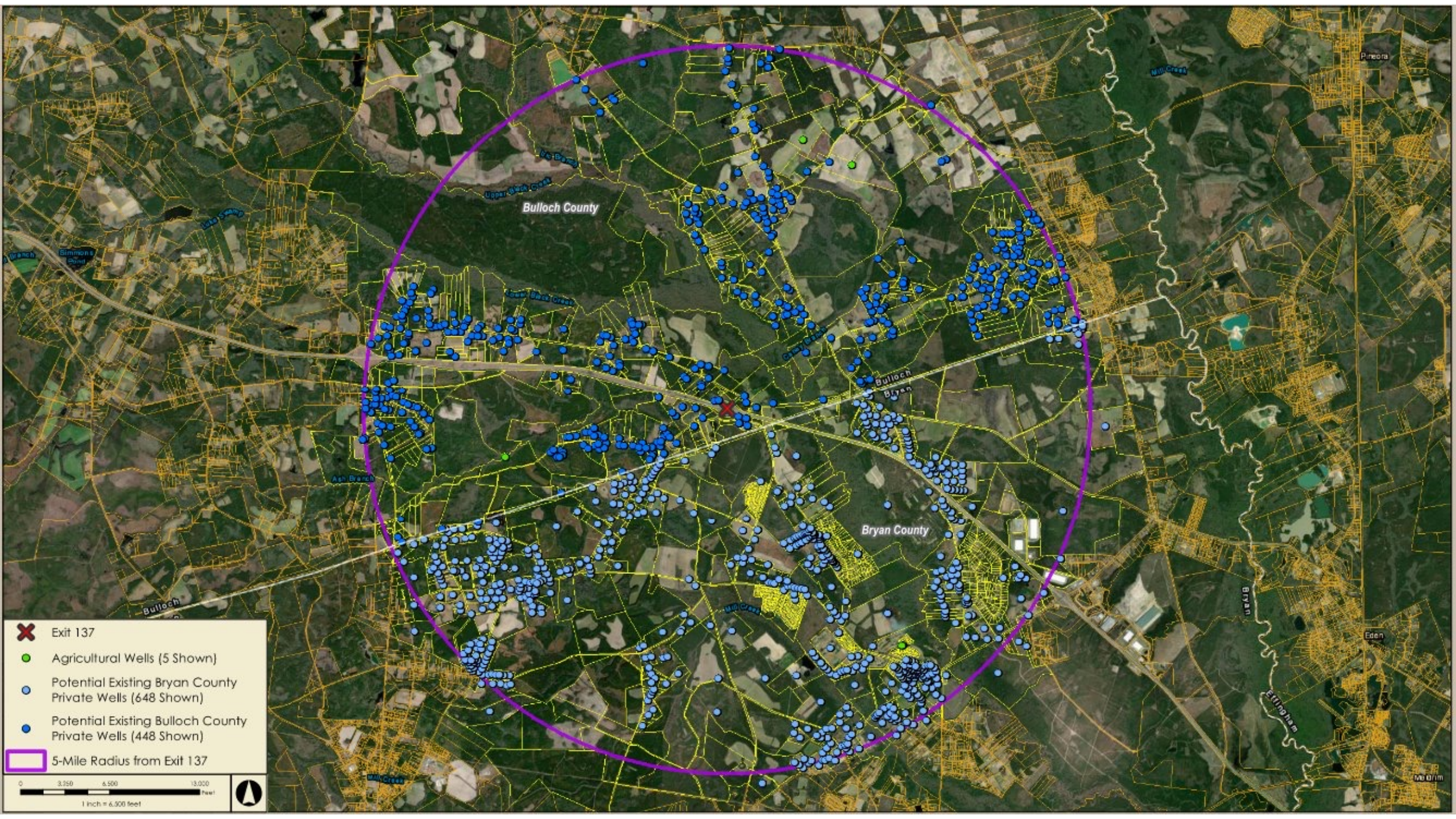
Figure 21. A, Average groundwater withdrawals and B, withdrawal intensity from the Floridan aquifer system by county, southeastern United States, 1995–2010 (data from Bellino, 2017).




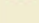

Simulated Drawdown from Proposed Withdrawal



5 Mile Radius
from Midpoint
of Interstate
16/Hwy 119

Source: GA EPD – Public Meeting and Public Hearing on Draft Bryan/Bulloch County Groundwater Withdrawal Permits, 8/13/2024



-  Exit 137
-  Agricultural Wells (5 Shown)
-  Potential Existing Bryan County Private Wells (648 Shown)
-  Potential Existing Bulloch County Private Wells (448 Shown)
-  5-Mile Radius from Exit 137





Permit No. A13-016-0459
Ben D. Martin
(Floridan aquifer)

Permit No. A98-016-0412
Ray Davis (Floridan aquifer)

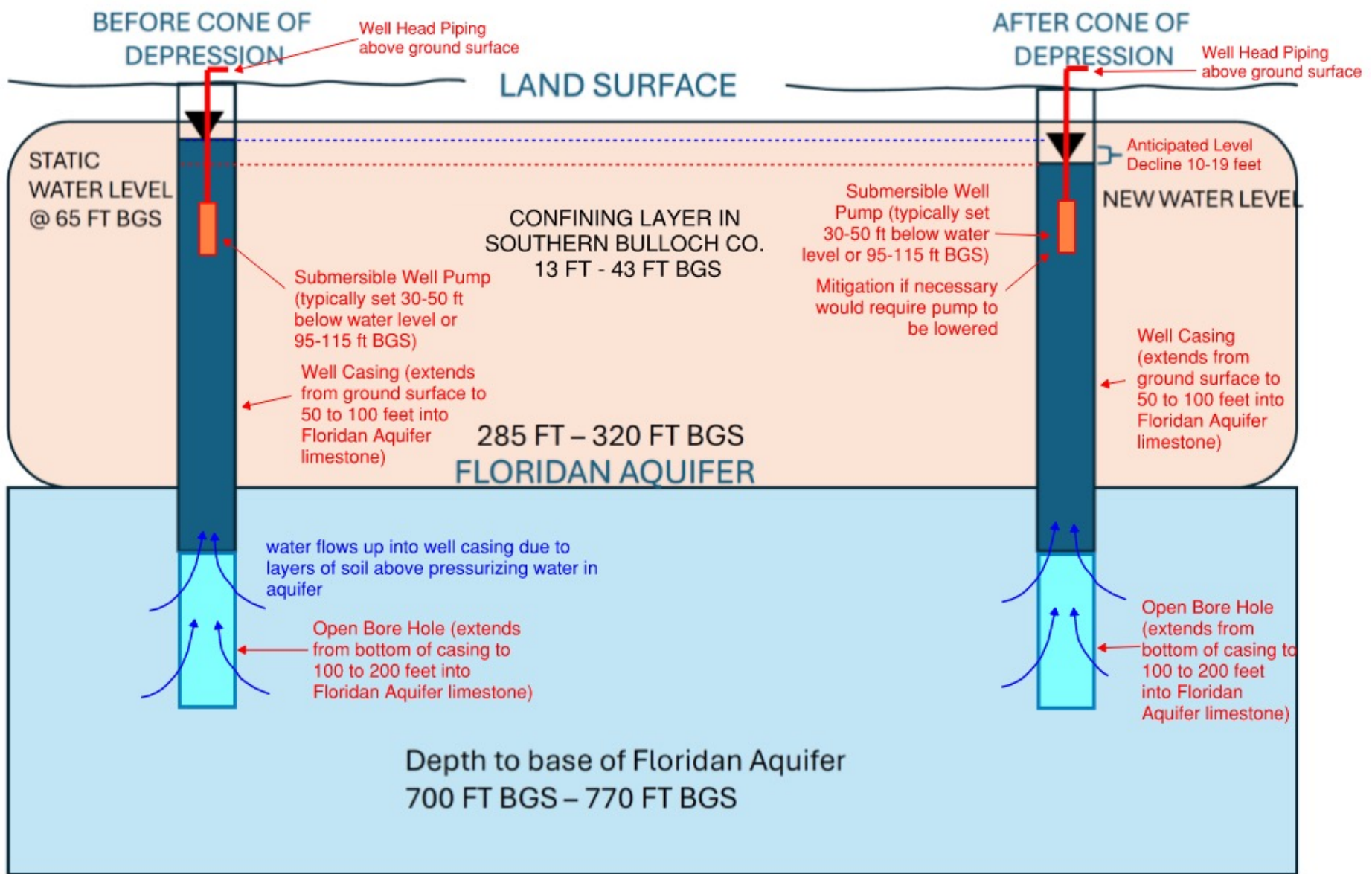
Permit No. A18-016-0503
Ted L. Davis (Floridan aquifer)

Permit No. A98-016-0412
Ray Davis (Floridan aquifer)

Permit No. A11-015-0009
Black Creek Golf Club
(Floridan aquifer)

Well Mitigation: Drawdown Schematic

Schematic on Drawdown



Modified from Source: GA EPD-
Public Meeting and Hearing on Draft
Bryan/Bulloch County Groundwater
Withdrawal Permits, 8/13/2024

Well Mitigation Fund

- Was added to address public comments and is an added safeguard to address any impacts to existing Floridan aquifer wells within the five-mile radius of the planned well sites.
- The fund is expected to have ample resources to provide any remediation to anyone that may be affected by the wells.
- The fund is currently \$1 million in pledges:
 - Bulloch County: \$250,000
 - Bryan County: \$250,000
 - Savannah JDA: \$250,000*
 - Hyundai Motor Group: \$250,000

*Conditional approval based on plan



Savannah Harbor-Interstate 16 Corridor
Joint Development Authority

BRYAN • BULLOCH • CHATHAM • EFFINGHAM

Well Mitigation Plan

- Policies and Program guidelines
- Eligibility Criteria
- Mitigation Measures (e.g. lowering well pumps, deepening wells, drill new wells, etc.)
- Well assessment requests and well registration documents
- Sample RFP for on-call licensed well-drillers



Savannah Harbor-Interstate 16 Corridor
Joint Development Authority

BRYAN • BULLOCH • CHATHAM • EFFINGHAM

Well Mitigation Plan

- Mitigation fund fiscal management guidelines:
 - Recommendations for annual review and reporting
 - Recommendations for annual fees/charges to increase fund balance
- Dedicated website for both Counties with links to pertinent information:
 - Public education and information documents
 - List of current Georgia licensed well-drillers
 - Forms and contact information



Savannah Harbor-Interstate 16 Corridor
Joint Development Authority

BRYAN • BULLOCH • CHATHAM • EFFINGHAM

Well Mitigation Plan

September - October 2024

Plan Preparation

October 2024

Present to Bryan County & Bulloch County Commissions

November 2024

Plan voted on by Bryan County & Bulloch County Commissions



**Savannah Harbor-Interstate 16 Corridor
Joint Development Authority**

BRYAN • BULLOCH • CHATHAM • EFFINGHAM

TRUTH ABOUT WATER

[Home](#)[FAQs](#)[Timeline](#)[Additional Resources](#)[News](#)

Truth About Water

Why Truth About Water?

The Truth About Water site was established to provide comprehensive, accurate information regarding Hyundai Motor Group Metaplant America (HMGMA) and its future water supply. The goal is to provide timely updates to the local community and other individuals. We encourage you to utilize Truth About Water as a resource for accessing the most up to date information, including news updates, project timelines, frequently asked questions and past documents.

Who We Are

The Savannah Harbor-Interstate 16 Corridor Joint Development Authority (Savannah JDA) manages the Truth About Water website. Founded in 2014, the Savannah JDA includes the development authorities of Bryan, Bulloch, Chatham and Effingham counties. It has been working together collaboratively with local governments and the State of Georgia on facilitating development of HMGMA for many years, including how to provide the site with a safe, sustainable and secure source of water.

Why We Care

The Savannah JDA wants to reassure the local community that the necessary water supply for HMGMA can be provided while protecting and preserving the environment, including the Floridan Aquifer and the Ogeechee watershed. There is a viable plan for future water needs and we care about doing economic development the right way for this community.